

# Following the Leader

## Addressing the Needs of Military Families through Collaboration

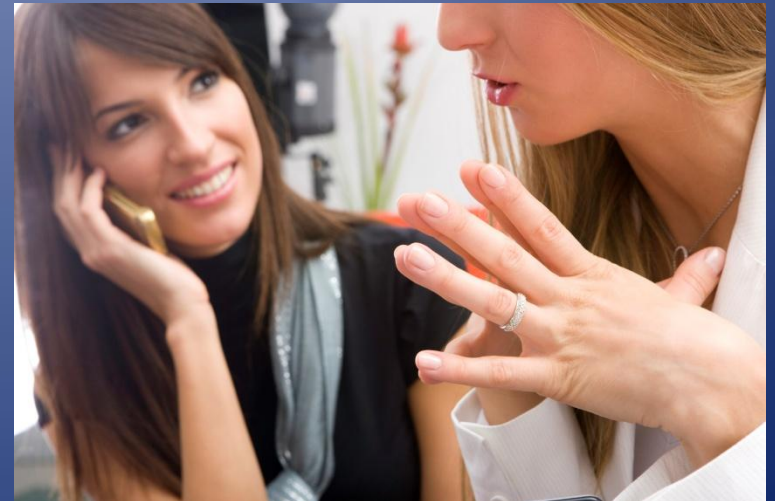
*County of San Bernardino Department of Behavioral Health*

# It Starts with a Good Idea (and sometimes with no idea at all)



# Building on Existing Relationships

- Conversations between Departments
- Input from community agencies and stakeholders
- Participation in community events
- More conversations and finally...



The idea begins to take shape



# The Pilot Project

- Identifying needs and assets
- Designing a program
- Including partners and following their lead
- Clearing the path
- Making it work



# Steps and Leaps





# Fostering Relationships and Including New Partners



COUNTY OF SAN BERNARDINO  
DEPARTMENT OF WORKFORCE DEVELOPMENT

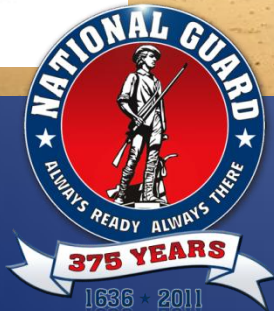


OUR JOB IS YOUR FUTURE

FIND A  
CANDIDATE

FIND A  
JOB

**SUICIDE** PREVENTION  
**LIFELINE**  
1-800-273-TALK (8255)



# Lessons Learned

- The importance of Cultural Competency
- Close the feedback loop
- Stay focused on items of importance
- Meet regularly
- Honor different perspectives
- Be ready for the next step in the evolution



Be ok with following the lead

<http://www.youtube.com/watch?v=fW8amMCVAJQ>