

# Working in Concert for Health

## Healthy and Sustainable Communities



Jacquolyn Duerr, MPH

California Department of Public Health

Division of Chronic Disease and Injury  
Control/Safe and Active Communities

June 2012

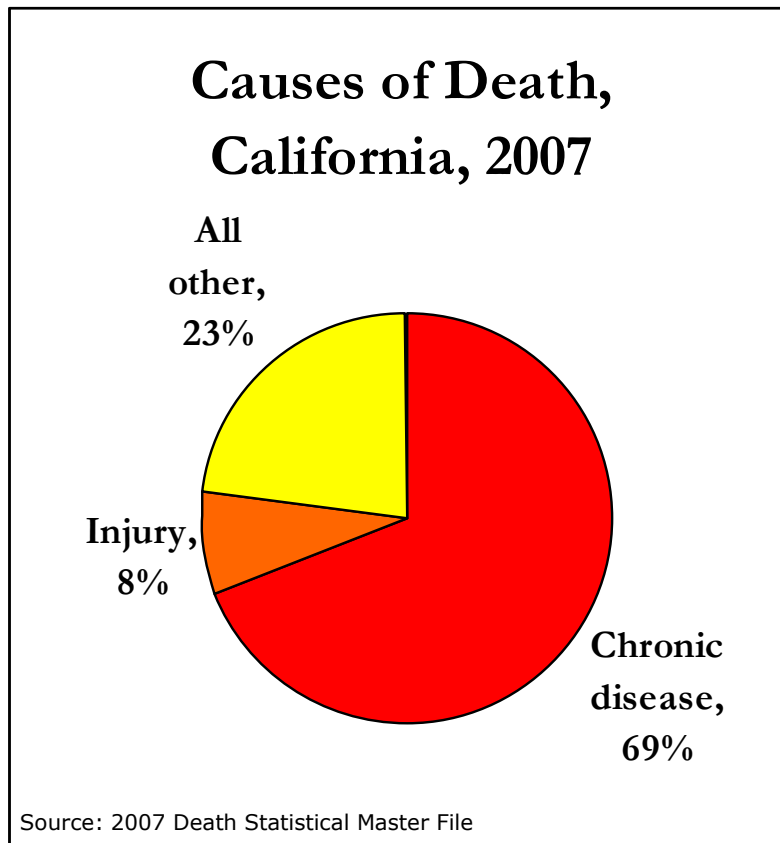
# Overview

---

- 1) California Health Challenges
- 2) Determinants of Health
- 3) What is a healthy community?
- 4) Why Cross Sector Prevention is Critical?
- 5) The HiAP concept
- 6) HiAP Task Force
- 7) Tobacco (and alcohol and food) retail campaign
- 8) Links to alcohol, tobacco, and drug prevention
- 9) Questions?

# California's Health Challenge

---



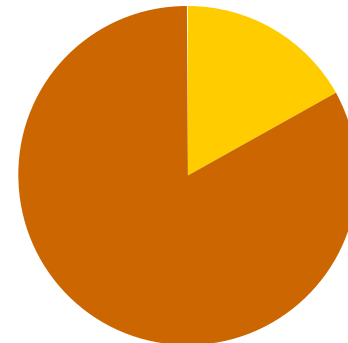
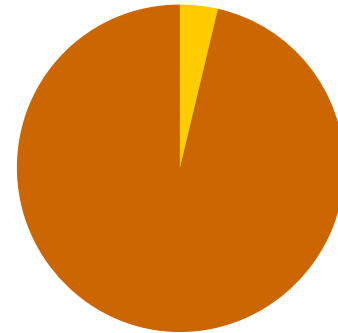
- Chronic disease accounts for >75% health care costs (U.S.)
- Injuries are leading cause of death for people ages 1-44
- Tobacco, poor diet, and physical inactivity top 3 causes of deaths; **alcohol is 4<sup>th</sup> leading cause of death**
- Inequities exist across health outcomes
  - Income, education, race/ethnicity
- Obesity rates high, threaten life expectancy

# Costs of Chronic Disease in CA

More than **96 cents of every dollar** spent in Medicare...

	2003	2023 (Projected)
Treatment Expenditures	\$27B	\$72B
Lost Productivity	\$106B	\$359B
<b>Total</b>	<b>\$133B</b>	<b>\$431B</b>

...and **83 cents of every dollar** spent in Medicaid



Milken Institute - based on MEPS/NHIS

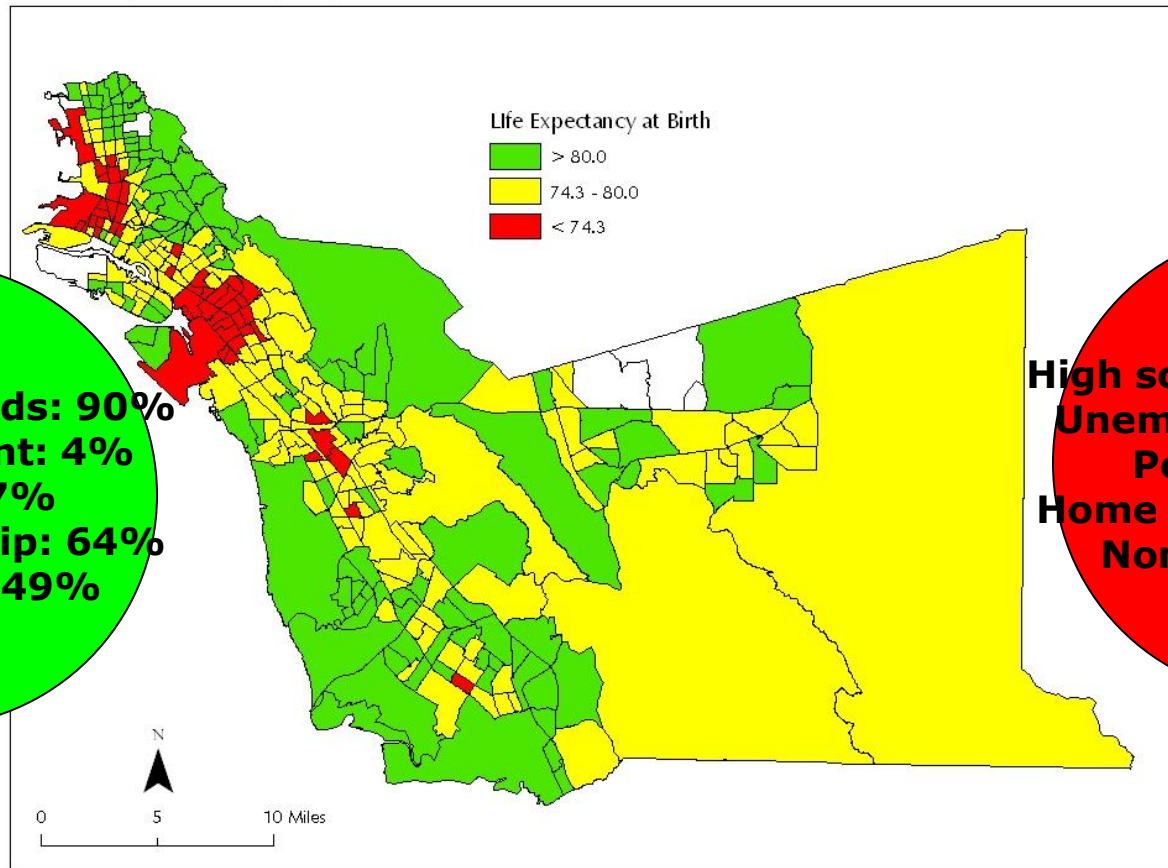
# Determinants of Health By the #'s

---

- ▣ Genes and biology: e.g., sex and age
- ▣ Health behaviors: e.g., alcohol use problems, injection drug use (needles), unprotected sex, and smoking
- ▣ Social environment or social characteristics: e.g., discrimination, income, and gender
- ▣ Physical environment or total ecology: e.g., where a person lives, poor housing, and neighborhood retail/marketing
- ▣ Health services or medical care: e.g., access to quality health care and having or not having insurance

# Place Matters

Life Expectancy by Tract



**High school grads: 90%**  
**Unemployment: 4%**  
**Poverty: 7%**  
**Home ownership: 64%**  
**Non-White: 49%**

**High school grads: 65%**  
**Unemployment: 12%**  
**Poverty: 25%**  
**Home ownership: 38%**  
**Non-White: 89%**

Source: CAPE, with data from vital statistics 1999-2001.

# Density of Off-sale Alcohol Outlets

● Off-sale alcohol outlet\*

\*Off-sale alcohol outlets are retail establishments authorized to sell beer, wine and/or distilled spirits for consumption off the premises where sold.

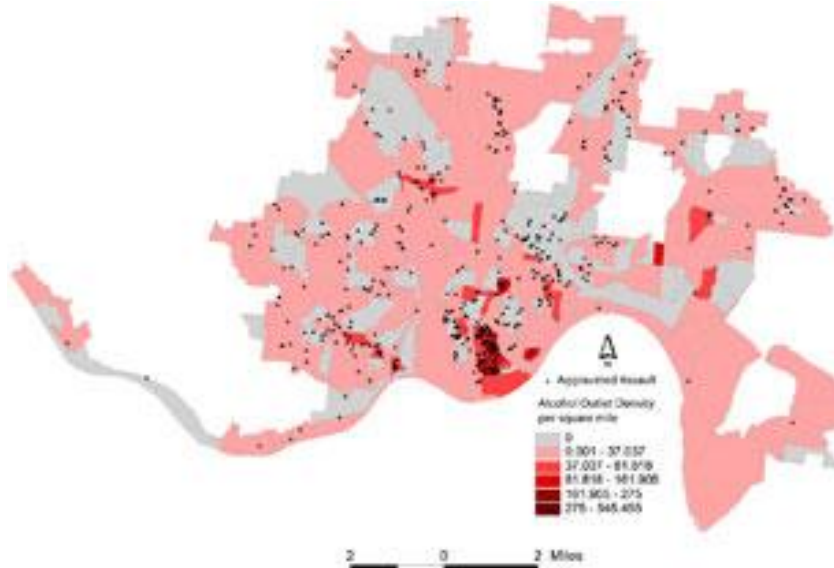
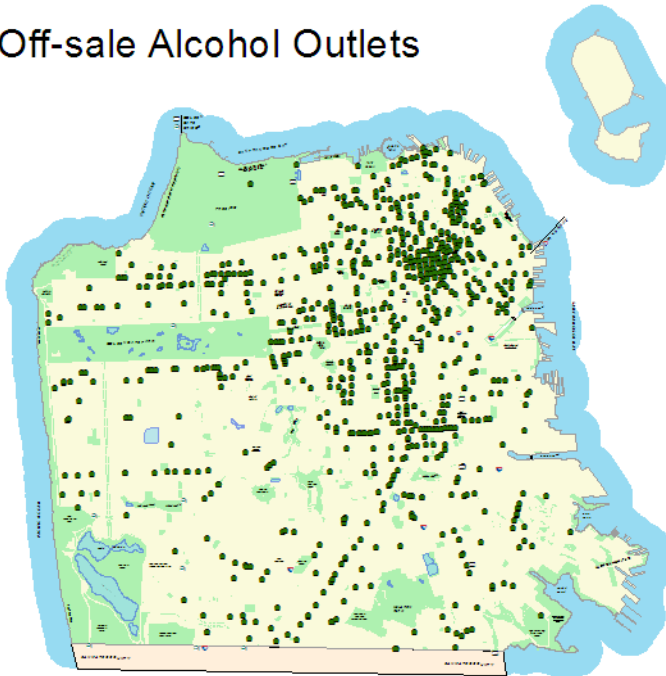


0 0.5 1 2 Miles

Source: California Department of Alcoholic Beverage Control, 2005

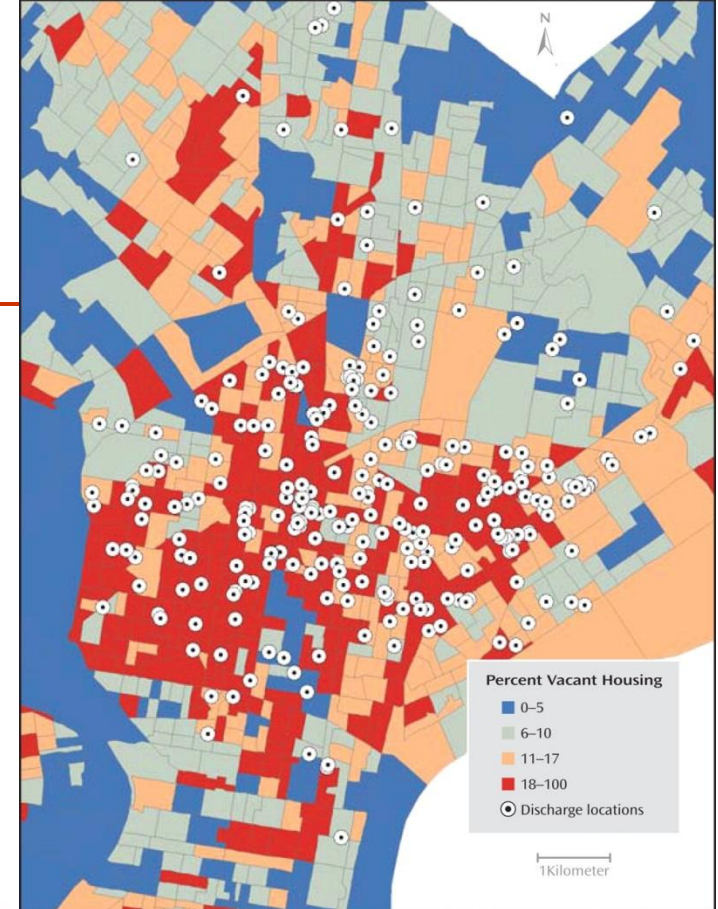
City and County of San Francisco  
Department of Public Health  
Environmental Health Section

Available at [www.thehdmt.org](http://www.thehdmt.org)



Aggravated Assault and Alcohol Outlet Density in Cincinnati, Ohio: January - June, 2008.

From: Pridemore, W.A. and E.H. Grylles. (2016). "Alcohol outlets and community levels of interpersonal violence: Spatial density, type of outlet, and seriousness of assault." American Association for the Advancement of Science Annual Meeting, San Diego, CA February 8 - 12.



# First, Do Prevention

## Second, Do It In Concert

---

- ❑ Public health's oath—Stop the problem before it creates risk and vulnerability
- ❑ Prevention \$ not growing; <less than 2-3% of overall health budget and ↓↓
- ❑ We cannot treat our way to health
- ❑ Community/stakeholders do not work on silos; they focus on 911 concerns
- ❑ Same solution solves multiple problems
- ❑ Broad support/constituencies and impacts
- ❑ Youth get it!



# The HiAP Concept

---

**We all have a role to play in creating healthy communities.**

- ▣ Environments in which people live, work, study and play impact health
- ▣ Decisions made by “non-health” agencies play a major role in shaping environments
- ▣ Consideration of health allows agencies to make more informed policy and program decisions and to identify win-wins

# What is a Healthy Community?

---

## ❑ Meets basic needs of all

- Safe, sustainable, accessible and affordable transportation options
- Affordable, accessible and nutritious foods and safe drinkable water
- Affordable, high quality, socially integrated and location-efficient housing
- Affordable, accessible and high quality health care
- Complete and livable communities including quality schools, parks and recreational facilities, child care, libraries, financial services and other daily needs
- Access to affordable and safe opportunities for physical activity
- Able to adapt to changing environments, resilient, and prepared for emergencies
- Opportunities for engagement with arts, music and culture

## ❑ Quality and sustainability of environment

- Clean air, soil and water, and environments free of excessive noise
- Tobacco- and smoke-free
- Green and open spaces, including healthy tree canopy and agricultural lands
- Minimized toxics, greenhouse gas emissions and waste
- Affordable and sustainable energy use
- Aesthetically pleasing

## ❑ Adequate levels of economic, social development

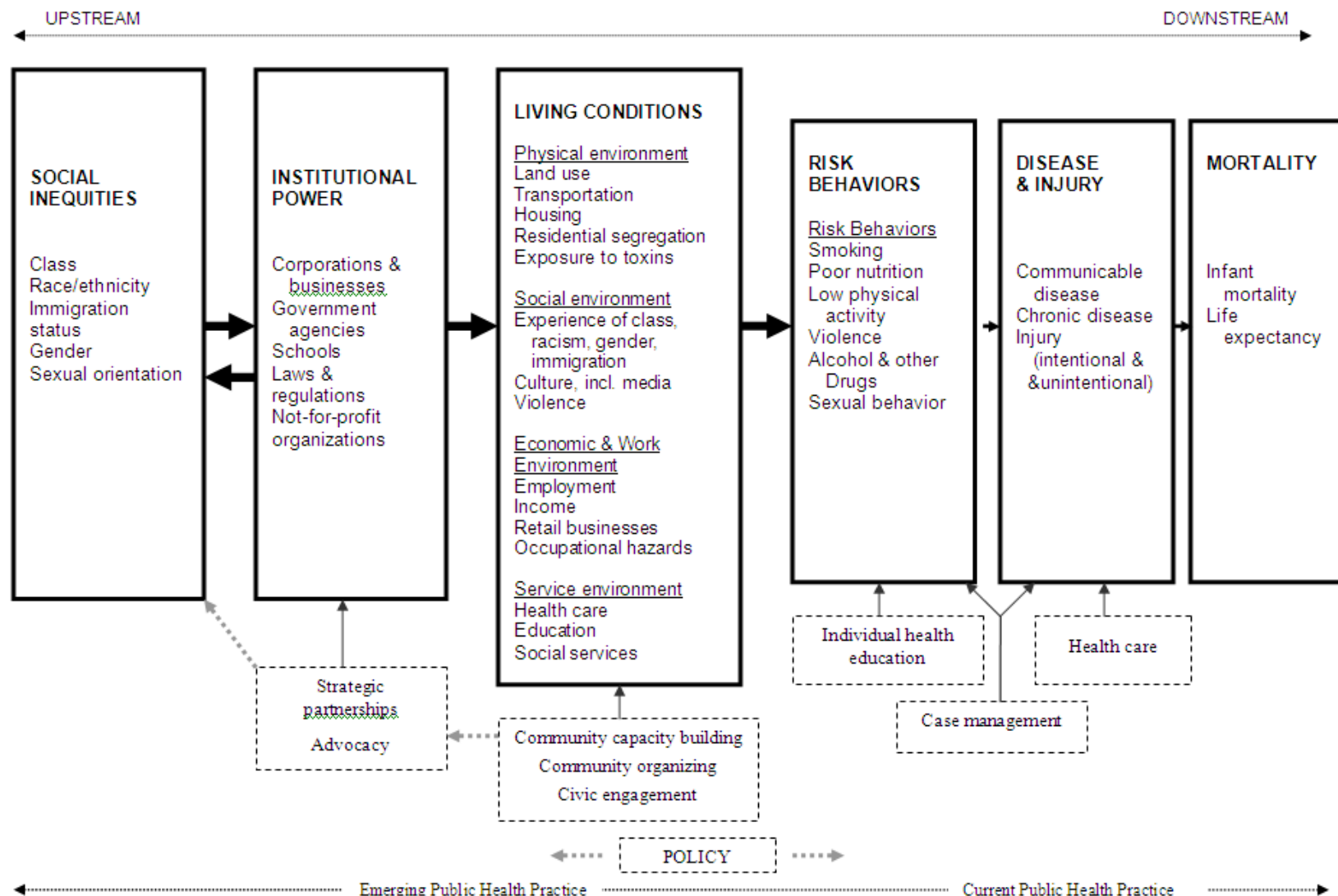
- Living wage, safe and healthy job opportunities for all, and a thriving economy
- Support for healthy development of children and adolescents
- Opportunities for high quality and accessible education

## ❑ Health and social equity

## ❑ Social relationships that are supportive and respectful

- Robust social and civic engagement
- Socially cohesive and supportive relationships, families, homes and neighborhoods
- Safe communities, free of crime and violence

## A PUBLIC HEALTH FRAMEWORK FOR REDUCING HEALTH INEQUITIES BAY AREA REGIONAL HEALTH INEQUITIES INITIATIVE



# Why We Need HiAP

---





# Why We Need HiAP



# Why We Need HiAP

---



**Teens with access to a safe park are more likely to engage in regular physical activity.**





# Why we need HiAP

---



# The Health in All Policies Task Force

---

## Executive Order S-04-10

- ▣ Directs Strategic Growth Council to establish Health in All Policies Task Force
- ▣ Purpose: “to identify priority programs, policies, and strategies to improve the health of Californians while advancing the SGC’s goals...”
- ▣ Process: facilitated and staffed by CDPH



# Strategic Growth Council

---

- ❑ Multi-agency council developed to enhance collaboration among state agencies in their work to:
  - Improve air and water quality
  - Protect natural resources and agriculture lands
  - Increase the availability of affordable housing
  - Improve infrastructure systems
  - Promote public health
  - Encourage sustainable land use planning
  - Meet California's climate change goals
- ❑ Composition
  - Secretaries of 5 State Agencies: Business, Transportation and Housing Agency, Environmental Protection Agency, Governor's Office of Planning and Research, Health and Human Services Agency, Natural Resources Agency
  - Public member
- ❑ Healthy communities share attributes of sustainable and equitable communities
- ❑ Many strategies to improve health are same as strategies to reduce GHG
  - Co-benefits = Win-Win

# Convening the Task Force

---

- ❑ SGC convened HiAP Task Force on March 17, 2010
- ❑ Designated 19 Agencies, Departments, and Offices
  - ❑ Air Resources Board
  - ❑ Office of the Attorney General
  - ❑ Business, Transportation, and Housing Agency
  - ❑ Dept of Community Services and Development
  - ❑ Dept of Education
  - ❑ Environmental Protection Agency
  - ❑ Dept of Finance
  - ❑ Dept of Food and Agriculture
  - ❑ Dept of Forestry and Fire Protection
  - ❑ Office of Gang and Youth Violence Policy
  - ❑ Health and Human Services Agency
  - ❑ Dept of Housing and Community Development
  - ❑ Labor and Workforce Development Agency
  - ❑ [Natural Resources Agency]
  - ❑ Dept of Parks and Recreation
  - ❑ Office of Planning and Research
  - ❑ Dept of Social Services
  - ❑ Dept of Transportation
  - ❑ Office of Traffic Safety

# Process: Aspirational Goals

---

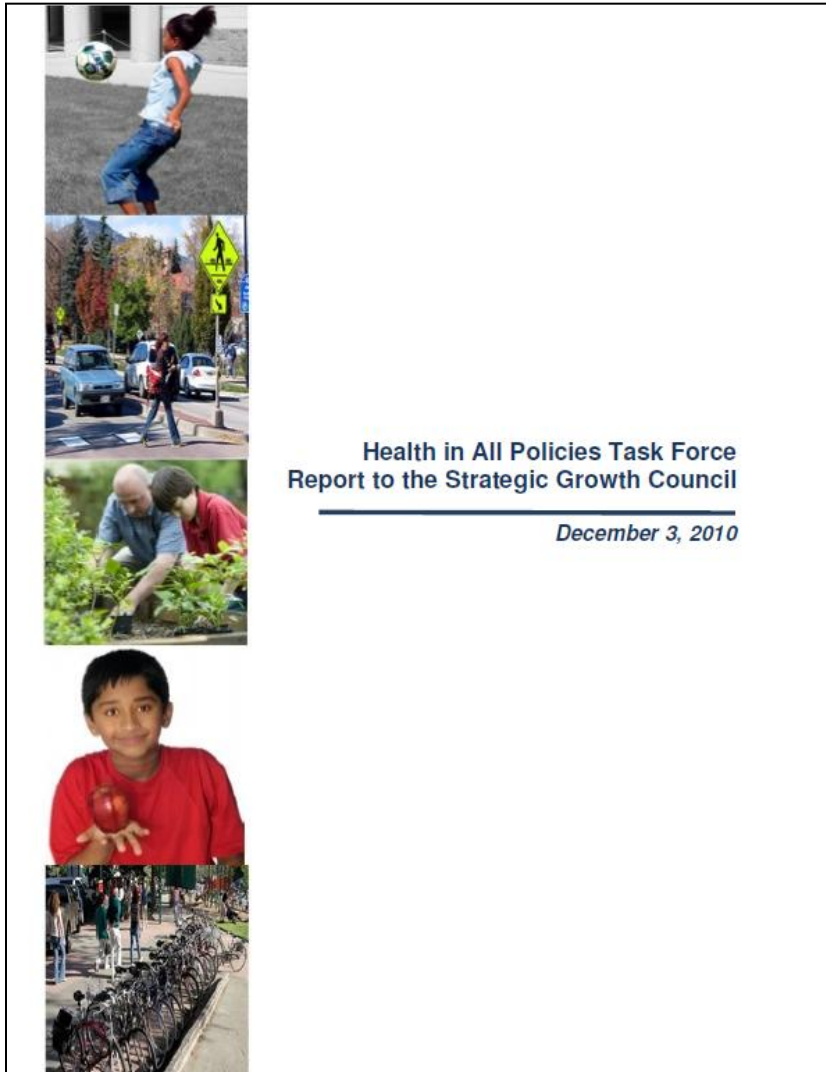
All California residents:

- ❑ have the option to safely walk, bike, or take public transit to school, work, and essential destinations
- ❑ live in safe, healthy, affordable housing
- ❑ have access to places to be active, including parks, green space, and healthy tree canopy
- ❑ are able to live and be active in their communities without fear of violence or crime
- ❑ have access to healthy, affordable foods at school, at work, and in their neighborhoods

California's decision makers are informed about the health consequences of various policy options during the policy development process

# Report to the SGC

---



## Topic areas



Active transportation



Housing and indoor spaces



Parks, urban greening, and places to be active



Community safety through violence prevention



Healthy food



Healthy public policy

# Current Work

---

- ▣ 11 recommendations prioritized for near-term implementation
  - Develop 1 – 3 year implementation plans
  - Track progress using process measures
- ▣ Cross-cutting themes
  - Interagency Collaboration
  - Equity
  - Community Engagement
  - Data

# Implementation Priority: Community Safety through Violence Prevention

---



## Develop and disseminate guidance on Crime Prevention through Environmental Design (CPTED)

- Safety is key to meeting SGC goals
- Community design features can prevent crime
  - “Eyes on the street”
  - Lighting
  - Design of public spaces
- California-specific guidance
- Endorsed by SGC in January 2012

# Possible Areas to Explore

---



- ❑ Retail outlets and zoning: Links between alcohol and healthy food access
- ❑ Education: Links between attendance rates, overall health outcomes, and alcohol abuse
- ❑ Community safety: Links between liquor outlet density and violence
- ❑ Transportation: Links between traffic-related injuries and deaths and alcohol, including pedestrian and bicyclist safety
- ❑ Built environment: Links between neighborhood characteristics and alcohol consumption

# Healthy Retail Environments: An Integrated Approach

Andrea Valdez, California Tobacco Control Program



# Potential Areas of Integration

---



# Using Lessons Learned--Take Small Steps at the Start

---

## 1. Getting started

Start planning together

Join/foster cross sector efforts

## 2. Getting to know you

Start with simple joint projects

Learn each other's language/priorities

## 3. Getting down to business

Follow your community's lead

Initiate a joint or cross sector effort



# If We Can Do Our Work in Concert, We Can Make a Powerful Sound and Light

---

Let's Get  
Started !

Today Is Not  
Soon Enough



# For More Information

---

- ❑ Linda Rudolph, MD, MPH--HiAP  
[linda.rudolph@cdph.ca.gov](mailto:linda.rudolph@cdph.ca.gov)
- ❑ Julia Caplan, MPP, MPH--HiAP  
[julia.caplan@cdph.ca.gov](mailto:julia.caplan@cdph.ca.gov)
- ❑ HiAP Task Force website:  
<http://www.sgc.ca.gov/hiap>
- ❑ Jacquolyn Duerr, MPH—CDIC  
[jacquolyn.duerr@cdph.ca.gov](mailto:jacquolyn.duerr@cdph.ca.gov)
- ❑ Andrea Valdez, MPP—Tobacco Control  
[andrea.valdez@cdph.ca.gov](mailto:andrea.valdez@cdph.ca.gov)

# Questions?

